

How to IDENTIFY THE SERIAL NUMBER FROM THE NAME PLATE



100-240V AC 50/60HZ

Hub / Travel: 20mm Ty: 60s

Ansteuerung / Input signal: 4-20mA

SN123456789-999

2022



Would you like to get a quick and easy overview of the spare parts available for your valve but don't have the order documents to hand right now? Just scan the ARI-ID (QR code) on your valve's name plate to see a list of all matching spare parts. Alternatively, you can start a search manually using the serial number printed on the name plate.

The position and layout of the name plate vary from one valve to another. The most common designs for each valve type are described in the following.

Steam traps

CONA

The position and layout of the name plate depend on your steam trap's operating principle, installation position and nominal diameter. The name plate can generally be found on the hood of the valve (Figure 1). The body and the body flange are other typical mounting positions.

The name plate shows our ARI-ID (QR code) and usually also the serial number (red box in Figure 1). If your name plate does not have a serial number, please use the ARI-ID.

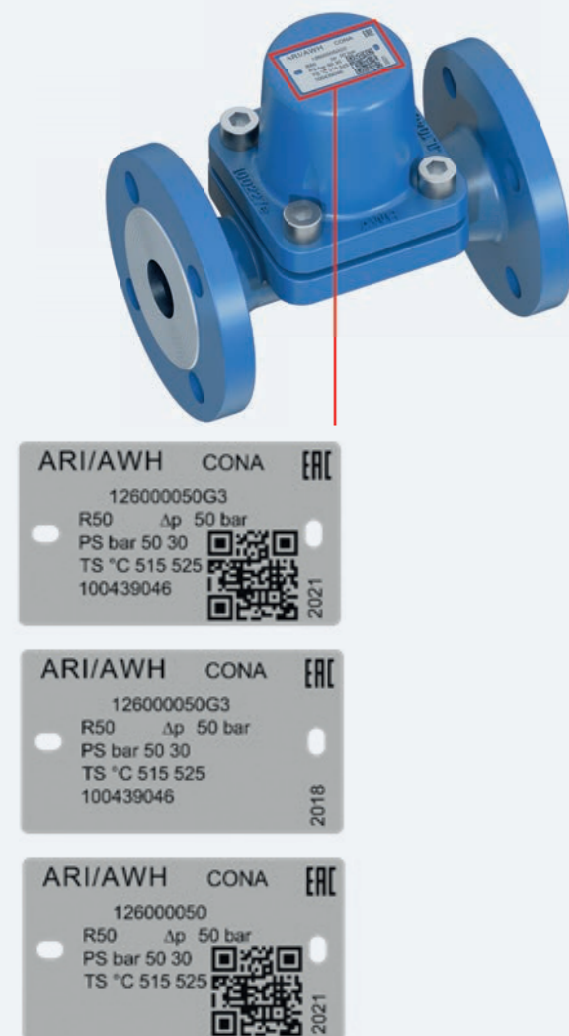


Fig. 1: Typical examples for steam traps (the red box shows the serial number)

Strainers

The name plate on our strainers is attached to the cover (Figure 2). Depending on the nominal diameter, you can find it either on the cover flange (DN 15-80) or on the top of the cover (DN 100-500). You will not find the serial number on the strainer's name plate owing to the limited space available. Please use the ARI-ID (QR code) to identify matching spare parts.

If your valve is an older model – without an ARI-ID – please ask your regular ARI contact or get in touch with your local ARI branch office directly. You can find the contact details under “Contact” in the navigation bar. We'll be happy to help you.

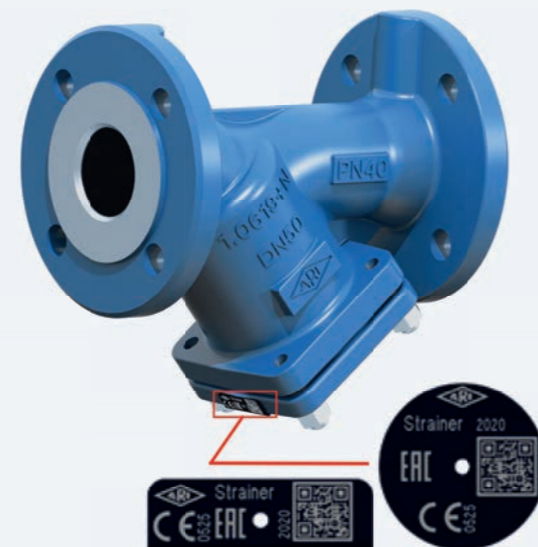


Fig. 2: Typical examples for strainers

Control valves

STEVI

Our control valves and associated actuators (DP, PREMIO and PREMIO-2G) each have their own name plate. The serial number and the ARI-ID (QR code) for the complete control valve, including the actuator, can be found directly on the actuator.

Pneumatic actuators

DP

You can find the serial number of a pneumatic actuator on the name plate on the top part of the actuator housing (Figure 3). In addition to the serial number, the name plate also shows our ARI-ID (QR code). You can get an overview of the spare parts available for your specific control valve using the ARI-ID or the serial number.

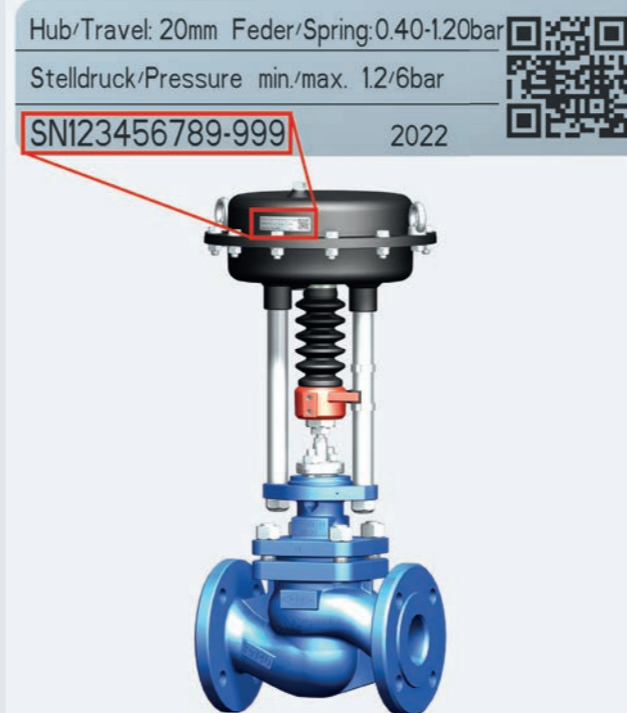


Fig. 3: Name plate showing the ARI-ID and serial number (red box) on a control valve with a pneumatic actuator

Electric actuators

PREMIO, PREMIO-Plus 2G

You can find the name plate of the electric actuators in our PREMIO series on the actuator housing (Figure 4). In addition to the serial number, the name plate also shows our ARI-ID (QR code). You can get an overview of the spare parts available for your specific control valve using the ARI-ID or the serial number.



Fig. 4: Name plate showing the ARI-ID and serial number (red box) on a control valve with an electric actuator

ARI Product Diversity



Control valves
STEVI® Pro
(Series 422/462, 470/471)



STEVI® Vario
(Series 448/449)



STEVI® Smart (Series 423/463,
425/426, 440/441, 450/451)



Control without auxiliary power
PREDU® / PREDEX® / PRESO® /
TEMPROL®

Control



Process valves
ZETRIX®
High Performance-Valves
ZEDOX®



Butterfly valves
ZESA®/GESA®/ZIVA®



Bellows sealed valves
FABA® Plus, FABA® Supra I/C



Stop valves with gland seal
STOBU®

Isolation



Safety valves
(DIN/EN)
SAFE



Safety valves
(DIN/EN)
SAFE TCP



Safety valves
(API 526, ASME)
REYCO® R



Safety valves (ASME)
REYCO® RL

Safety



Steam traps CONA®
(mechanical ball float / thermo-
static bimetallic and membrane /
thermodynamic), **monitoring**
systems
CONA® Control



Manifolds
COD® for collecting and
diverting purpose



**Steam traps with multi-
valving technology CONA®**
"All-in-One" (incl. stop valve,
inside strainer, back-flow
protection, drain valve)

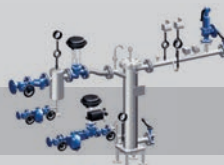


Mechanical pump systems
CONLIFT®, CONA® P

Steam Trapping



e.g. pressure reducing station
PREsys®



e.g. heat exchanger
ENCOSys®



e.g. condensate return system
CORsys®



e.g. feedwater tank with
deaerator dome

Engineered Systems



Profit from diversity made by ARI.
Please don't hesitate to ask for more information!

www.ari-armaturen.com